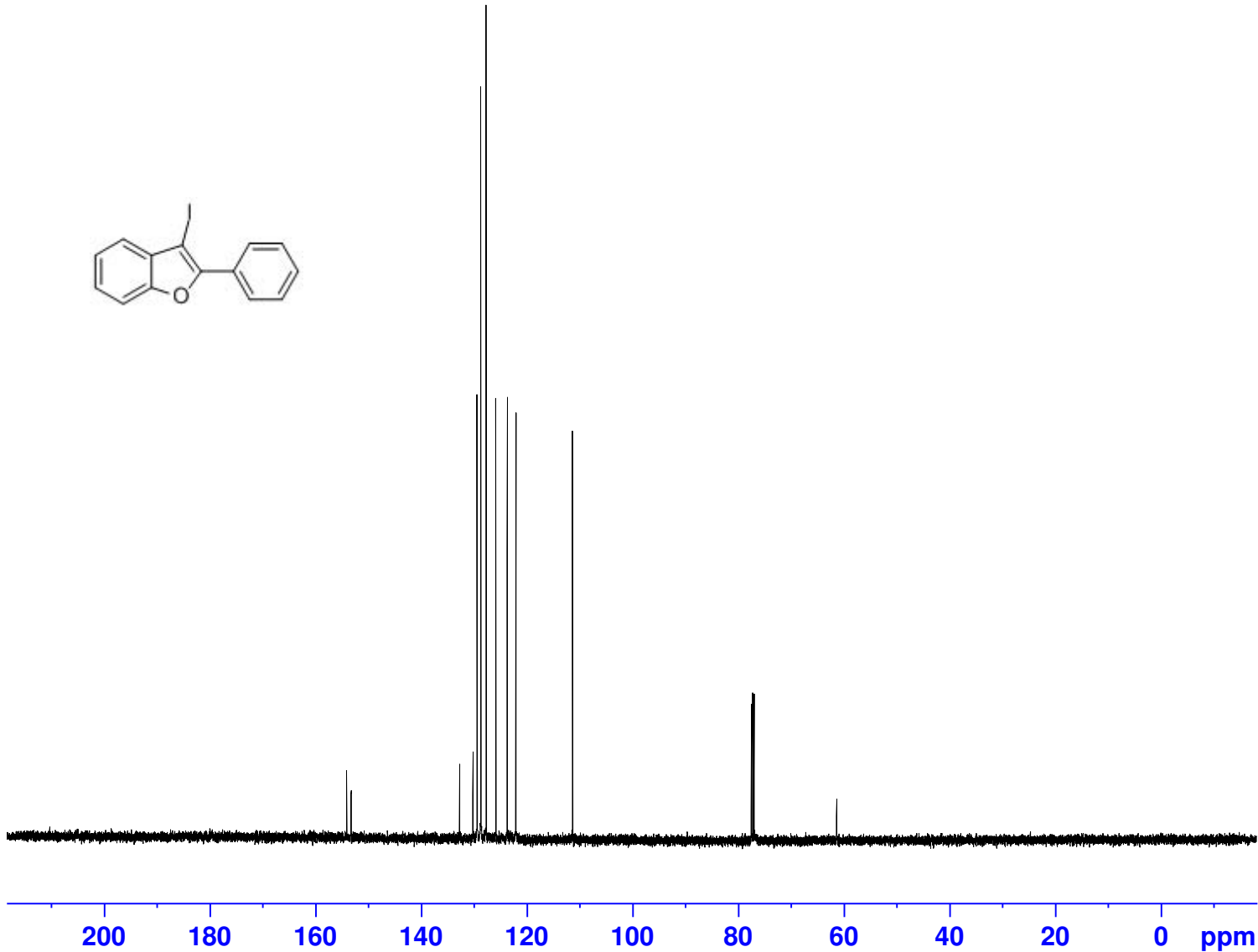


154.14
153.28
132.71
130.22
129.44
128.71
127.71
125.88
123.72
122.06
111.38

77.48
77.23
76.98

61.35



Current Data Parameters

NAME 2_44_13C
EXPNO 1
PROCNO 1

F2 - Acquisition Parameters

Date_ 20140422
Time 12.00
INSTRUM spect
PROBHD 5 mm PATXI 1H/
PULPROG zgdc
TD 178568
SOLVENT CDC13
NS 230
DS 0
SWH 29761.904 Hz
FIDRES 0.166670 Hz
AQ 2.9999423 sec
RG 196.79
DW 16.800 usec
DE 10.00 usec
TE 297.1 K
D1 2.00000000 sec
D11 0.03000000 sec
TDO 1

==== CHANNEL f1 =====

SFO1 125.7703643 MHz
NUC1 13C
P1 14.00 usec
PLW1 170.0000000 W

==== CHANNEL f2 =====

SFO2 500.1320005 MHz
NUC2 1H
CPDPRG[2] waltz16
PCPD2 90.00 usec
PLW2 12.19999981 W
PLW12 0.20893000 W

F2 - Processing parameters

SI 131072
SF 125.7577684 MHz
WDW EM
SSB 0
LB 1.00 Hz
GB 0
PC 1.40